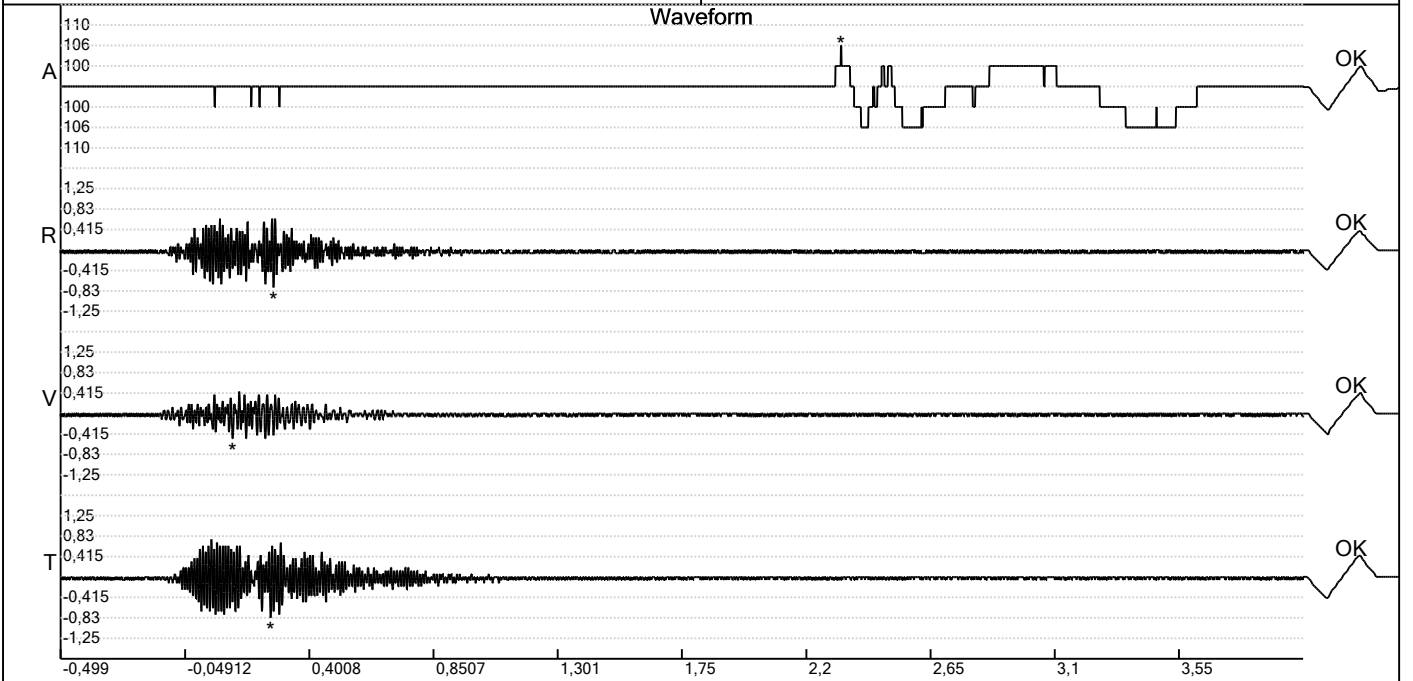


Carrière de BRS  
 Aywaille -5  
 Tir du 28/08/2023  
 Sismographe placé au  
 261 Halleux  
 4710 Comblain-au-Pont

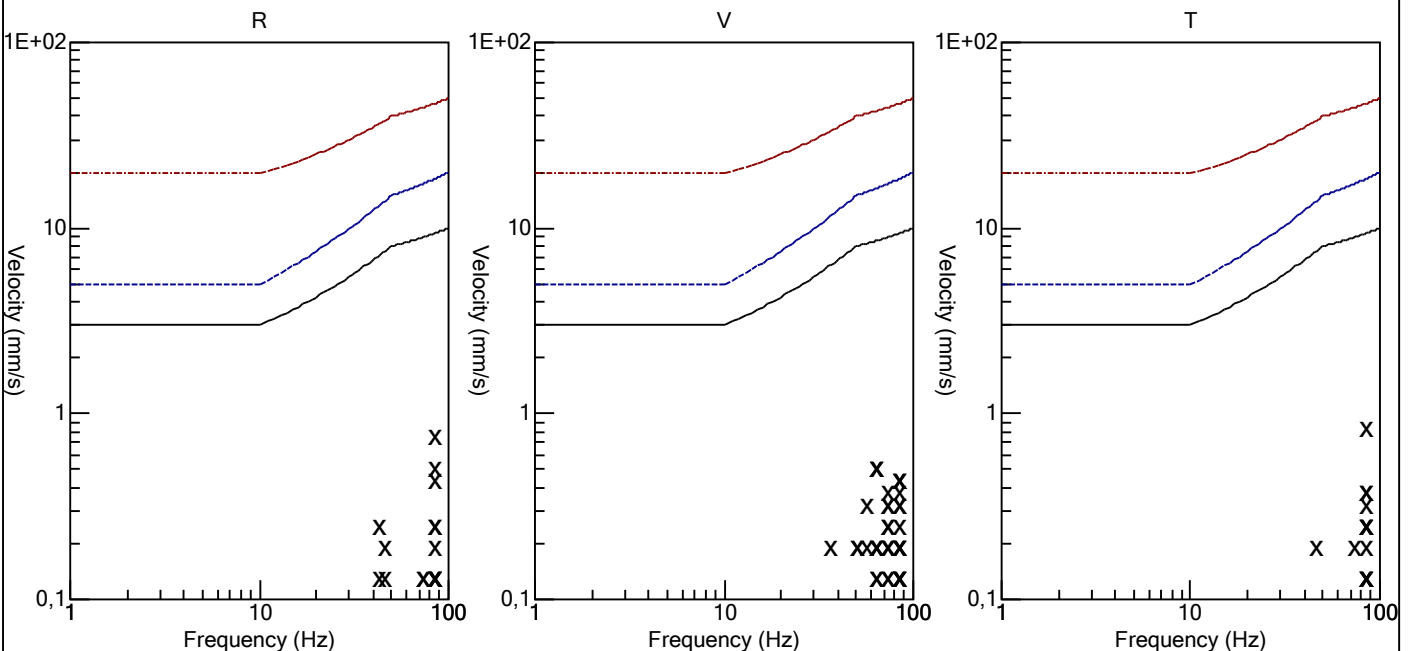
Record: 1789202308281401044.dtb  
 Number: 044  
 Seismograph: Mini-Seis 1789  
 Type of Record: Waveform  
 Date: 28-08-23 14:01:00  
 Duration: 4,50 Seconds  
 Sample Rate: 1024  
 Pre-Trigger: 0,5 Seconds  
 Seismic Trigger: 0,51 mm/s  
 Acoustic Trigger: 142,1 dB  
 Seismic Gain: 63,5  
 Acoustic Gain: 141,9 dB  
 Voltage: 6,4

**Peaks and Frequencies**  
 PPV Maximum (Geo #1): 0,83 mm/s  
 Acoustic #1: 106,0 dB @ 15,0 Hz (2,327148 s)  
 Radial #1: 0,76 mm/s @ 85,3 Hz (0,2724609 s)  
 Vertical #1: 0,51 mm/s @ 64,0 Hz (0,1240234 s)  
 Transverse #1: 0,83 mm/s @ 85,3 Hz (0,2617188 s)  
 Last Calibration Date: 03-12-21

**Graph Information**  
 Time Range: -0,499 s to 4 s, Intervals: 0,4499 Seconds



Velocity vs. Frequency (DIN 4150-3 Tab 1)

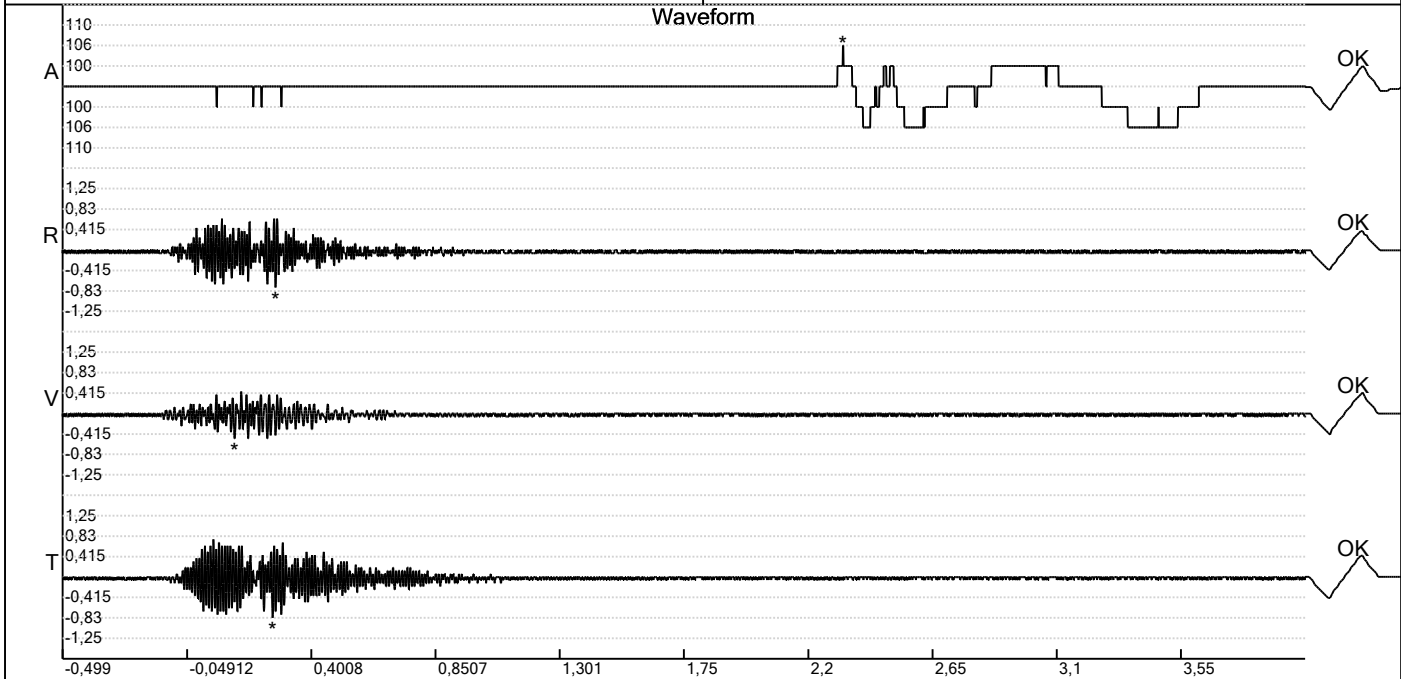


Carrière de BRS  
 Aywaille -5  
 Tir du 28/08/2023  
 Sismographe placé au  
 261 Halleux  
 4710 Comblain-au-Pont

Record: 1789202308281401044.dtb  
 Number: 044  
 Seismograph: Mini-Seis 1789  
 Type of Record: Waveform  
 Date: 28-08-23 14:01:00  
 Duration: 4,50 Seconds  
 Sample Rate: 1024  
 Pre-Trigger: 0,5 Seconds  
 Seismic Trigger: 0,51 mm/s  
 Acoustic Trigger: 142,1 dB  
 Seismic Gain: 63,5  
 Acoustic Gain: 141,9 dB  
 Voltage: 6,4

**Peaks and Frequencies**  
 PPV Maximum (Geo #1): 0,83 mm/s  
 Acoustic #1: 106,0 dB @ 15,0 Hz (2,327148 s)  
 Radial #1: 0,76 mm/s @ 85,3 Hz (0,2724609 s)  
 Vertical #1: 0,51 mm/s @ 64,0 Hz (0,1240234 s)  
 Transverse #1: 0,83 mm/s @ 85,3 Hz (0,2617188 s)  
 Last Calibration Date: 03-12-21

**Graph Information**  
 Time Range: -0,499 s to 4 s, Intervals: 0,4499 Seconds



**Fast Fourier Transform (Amplitude Spectrum)**

